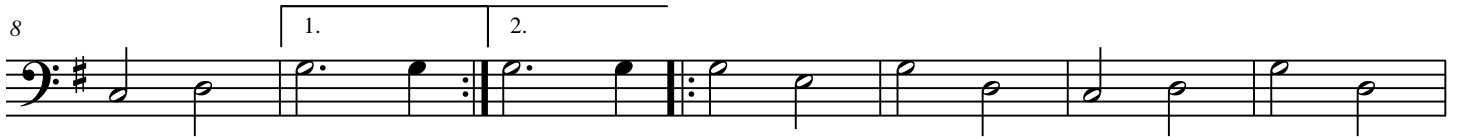


Cello

Glise de Sherbrooke

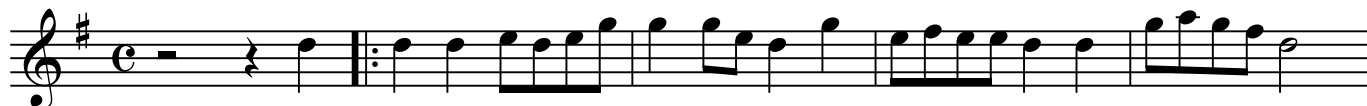
Rev Apr 20, 2010



Flute

Glise de Sherbrooke

Rev Apr 20, 2010



D



Harm-1

Glise de Sherbrooke

Rev Apr 20, 2010



D



Lead

Glise de Sherbrooke

Rev Apr 20, 2010

G C G C D G

The first staff of music is in treble clef with a key signature of one sharp (F#) and a common time signature (C). It begins with a whole rest followed by a quarter note G4. A repeat sign follows, with the first ending consisting of four measures of eighth notes: G4-A4-B4, G4-A4-B4, G4-A4-B4, and G4-A4-B4. The second ending consists of four measures of eighth notes: G4-A4-B4, G4-A4-B4, G4-A4-B4, and G4-A4-B4.

G C G C D G G C

6

The second staff of music continues the melody. Measures 6-8 are eighth notes: G4-A4-B4, G4-A4-B4, G4-A4-B4. Measure 9 is a quarter note G4. Measure 10 is a quarter note A4. Measure 11 is a quarter note B4. A repeat sign follows, with two endings. The first ending is a quarter note G4. The second ending is a quarter note G4. After the second ending, there are four measures of eighth notes: G4-A4-B4, G4-A4-B4, G4-A4-B4, and G4-A4-B4.

G C D G C G

12

The third staff of music continues the melody. Measures 12-13 are eighth notes: G4-A4-B4, G4-A4-B4. Measure 14 is a quarter note G4. Measure 15 is a quarter note A4. Measure 16 is a quarter note B4. The staff concludes with four measures of eighth notes: G4-A4-B4, G4-A4-B4, G4-A4-B4, and G4-A4-B4.

C D G G

17

The fourth staff of music concludes the piece. Measures 17-18 are eighth notes: G4-A4-B4, G4-A4-B4. Measure 19 is a quarter note G4. Measure 20 is a quarter note A4. A repeat sign follows, with two endings. The first ending is a quarter note G4. The second ending is a quarter note G4. The piece ends with a double bar line.