

Lead

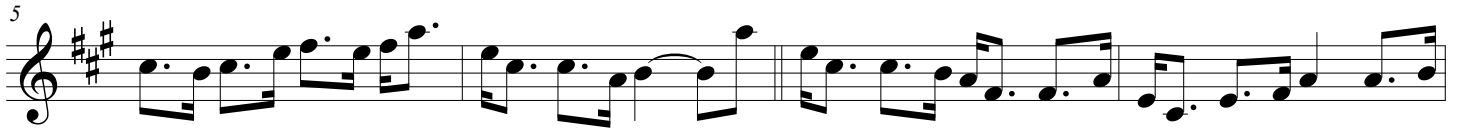
THE LIME HILL

Rev. May 30, 2017

D A Bm A E7 A A D A



A F#m Bm E7 A D A



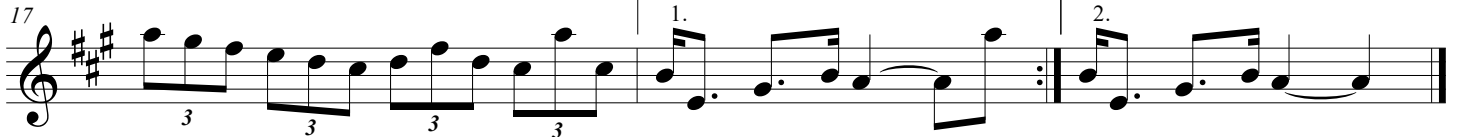
A D E7 A A A E7



F#m F#m D A A7



D A Bm A E7 A E7 A



Harm- I

THE LIME HILL

Rev. May 30, 2017

5

9

13

17

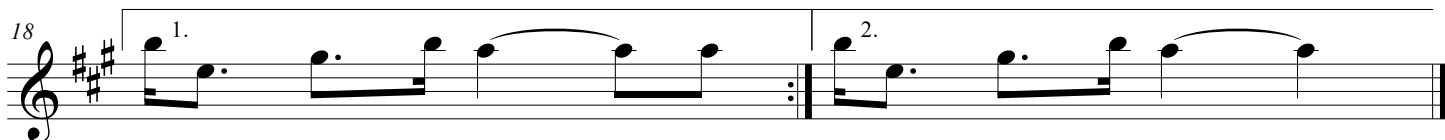
3 3 3 3

1. 2.

Flute

THE LIME HILL

Rev. May 30, 2017



Harm- II

THE LIME HILL

Rev. May 30, 2017

