

Lead

Pot Pourri II

Rev. Jan. 06, 2013

La Bastringue
Flute plays Intro

G sus4 G/D G D7 G Am D6 D7 G G

6 D7 G Gmaj7 Am6 D7 G/D G 3 D7 G Am

12 D6 D7 G D6 D7 G Marianne S'en Va Au Moulin G Em Bm⁷/G Am
1. 2. Flute Plays Intro

18 D7 G G Em Bm/G Am D7 G G Em Bm/G Am

25 D7 Am7 D6 G Em Bm/G D7 Am D7 G D7 G
1. 2.

32 A St. Malo G D G D7 Bm Em G G D

39 D G C9 CD D7 G D D7 G G Prendre Un P'tit Coup G
1. 2. Flute plays Intro

48 G D7 G G Bm Em7 Am Am

58 D7 G G G D7 G G C'Est L'Aviron D
1. 2. Flute plays Intro

70

Pot Pourri II

2 D GD D D GD D A D A

Musical staff 1 (measures 81-87) with treble clef, key signature of one sharp (F#), and various rhythmic patterns including eighth and sixteenth notes.

Musical staff 2 (measures 88-94) with treble clef, key signature of one sharp, and annotations: "1.", "2.", "Le Bon Vin M'Endort", "Flute plays Intro", "Duet With Flute".

Musical staff 3 (measures 95-100) with treble clef, key signature of one sharp, and annotations: "G D G G G D C G".

Musical staff 4 (measures 101-107) with treble clef, key signature of one sharp, and annotations: "D G C G D G D G", "V'la Bon Vent", "Flute plays Intro".

Musical staff 5 (measures 108-117) with treble clef, key signature of one sharp, and annotations: "Am Am E7 Am Am E7 Am Am".

Musical staff 6 (measures 118-128) with treble clef, key signature of one sharp, and annotations: "Em Am Em Am Em G Am G Am Am".

Musical staff 7 (measures 129-138) with treble clef, key signature of one sharp, and annotations: "Am E7 Am Am E7 Am".

Pot Pourri II

Special Lead

Rev. Jan. 06, 2013

La Bastringue
Flute plays Intro

Lead

G sus4 **G/D** ³ **G** **D7** **G** **A**m **D**₆ **D7** **G**

Ld

G **D7** **G** **G** maj7 **A**m6 **D7** **G/D** **G**

Ld

D7 **G** **A**m **D**₆ **D7** **G** **D**₆ **D7** **G**

Ld

G **E**m **B**m/G **A**m **D7** **G** **G** **E**m

Marianne S'en Va Au Moulin
Flute plays Intro

Ld

Bm/G **A**m **D7** **G** **G** **E**m **B**m/G **A**m **D7** **A**m7 **D**₆

Ld

G **E**m **B**m/G **D7** **A**m **D7** **G** **D7** **G**

Ld

G **D** **G** **D7** **B**m **E**m **G** **G** **D** **D** **G**

A St. Malo
Flute plays Intro

Ld

C₉ **C** **D** **D7** **G** **D** **D7** **G** **G**

Ld

Prendre Un P'tit Coup
Flute plays Intro

Pot Pourri II
Special Lead

2

G D7 G G Bm Em7 Am Am

Ld 60

Musical staff for lead line 60-66, starting with a treble clef and a key signature of one sharp (F#). The melody consists of quarter and eighth notes.

Ld 71

D7 G G G D7 G G C'Est L'Aviron Flute plays Intro D Lead

Musical staff for lead line 71-76. It includes a first ending (1, 2) and a second ending (2). The key signature changes to two sharps (F# and C#) for the 'C'Est L'Aviron' section.

Ld 81

D G D D D G D D A D

Musical staff for lead line 81-86, featuring a rhythmic pattern of eighth notes.

Ld 87

A D A D A D D G G Le Bon Vin M'Endort Flute plays Intro

Musical staff for lead line 87-93. It includes first (1, 2) and second (3) endings. The key signature changes to three sharps (F#, C#, G#) for the 'Le Bon Vin M'Endort' section.

Ld 94

D G G D G G G D

Lead

Musical staff for lead line 94-99, featuring a rhythmic pattern of eighth notes.

Ld 100

C G D G C G D G D G

Musical staff for lead line 100-104. It includes first (1, 2) and second (3) endings. The key signature changes to two sharps (F# and C#) for the 'V'la Bon Vent' section.

Ld 105

V'la Bon Vent Flute plays Intro Am Am E7 Am

Lead

Musical staff for lead line 105-113, starting with a 2/4 time signature. It includes a first ending (1, 2).

Ld 114

Am E7 Am Am Em Am Em Am Em G

Musical staff for lead line 114-123, featuring a rhythmic pattern of eighth notes.

Ld 124

Am G Am Am Am E7 Am

Musical staff for lead line 124-132. It includes a first ending (1, 2) and a second ending (3).

Ld 133

Am E7 Am

Musical staff for lead line 133-135, featuring a rhythmic pattern of eighth notes.

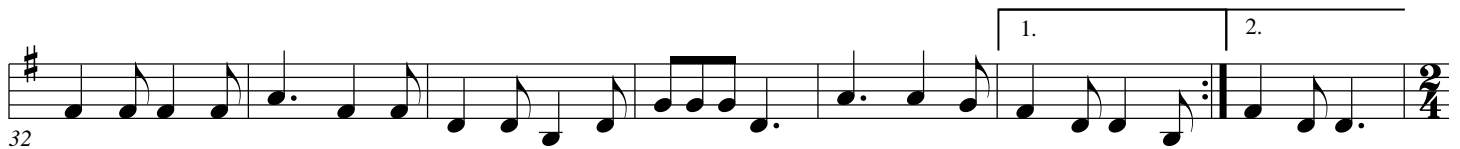
Harm-1

Pot Pourri II

Rev. Jan. 06, 2013

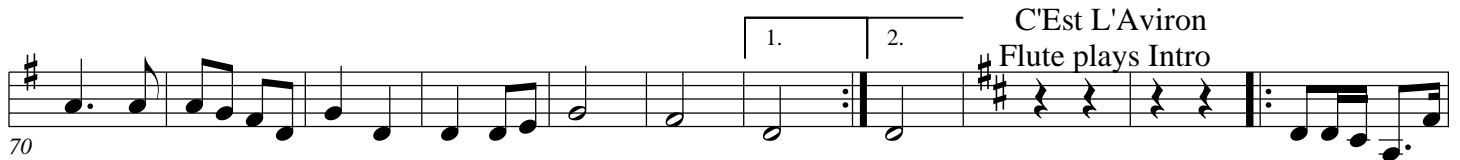
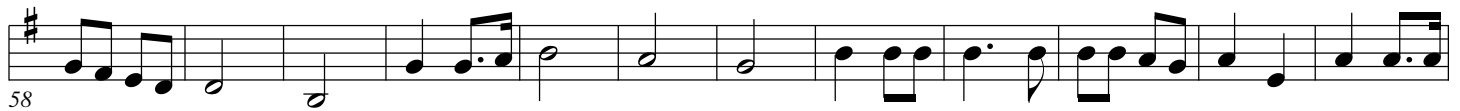
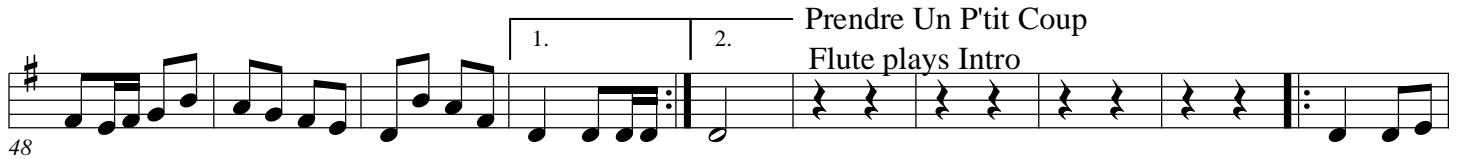
La Bastringue

Flute plays Intro



A St. Malo

Flute plays Intro



Pot Pourri II

2

81

87

1. 2.

Le Bon Vin M'Endort
Flute plays Intro

94

100

1. 2.

V'la Bon Vent
Flute plays Intro

106

116

1. 2.

127

Flute

Pot Pourri II

Rev. Jan. 06, 2013

La Bastringue
Flute plays Intro

Musical notation for the first section, 'La Bastringue'. It consists of seven staves of music in G major and 4/4 time. The first staff starts with a treble clef and a key signature of one sharp (F#). The piece begins with a 3-measure introduction. The notation includes various rhythmic patterns, including eighth and sixteenth notes, and rests. Measure numbers 6, 12, and 18 are indicated at the start of their respective staves.

Marianne S'En Va Au Moulin
Flute plays Intro

Musical notation for the second section, 'Marianne S'En Va Au Moulin'. It consists of three staves of music in G major and 4/4 time. The first staff starts with a treble clef and a key signature of one sharp (F#). The piece begins with a 2-measure introduction. The notation includes various rhythmic patterns, including eighth and sixteenth notes, and rests. Measure numbers 18, 24, and 31 are indicated at the start of their respective staves.

A St. Malo
Flute plays Intro

Musical notation for the third section, 'A St. Malo'. It consists of two staves of music in G major and 2/4 time. The first staff starts with a treble clef and a key signature of one sharp (F#). The piece begins with a 2-measure introduction. The notation includes various rhythmic patterns, including eighth and sixteenth notes, and rests. Measure numbers 31 and 38 are indicated at the start of their respective staves.

Prendre Un P'tit Coup
Flute plays Intro

Musical notation for the fourth section, 'Prendre Un P'tit Coup'. It consists of two staves of music in G major and 4/4 time. The first staff starts with a treble clef and a key signature of one sharp (F#). The piece begins with a 2-measure introduction. The notation includes various rhythmic patterns, including eighth and sixteenth notes, and rests. Measure numbers 46 and 56 are indicated at the start of their respective staves.

C'est L'Aviron
Flute plays Intro

Musical notation for the fifth section, 'C'est L'Aviron'. It consists of two staves of music in G major and 4/4 time. The first staff starts with a treble clef and a key signature of one sharp (F#). The piece begins with a 2-measure introduction. The notation includes various rhythmic patterns, including eighth and sixteenth notes, and rests. Measure numbers 56 and 68 are indicated at the start of their respective staves.

Pot Pourri II

2

79

86

Le Bon Vin M'Endort
D G
Flute plays Intro

93

99

104

V'la Bon Vent
Flute plays Intro
D G

112

122

132

Cello

Pot Pourri II

Rev. Jan. 06, 2013

La Bastringue

Flute plays Intro

Musical notation for the first piece, La Bastringue. It consists of two staves. The first staff is in bass clef with a key signature of one sharp (F#) and a 4/4 time signature. It begins with a series of quarter notes, followed by a repeat sign and a melodic phrase. The second staff is in treble clef with the same key signature and time signature, continuing the melody with various note values and rests.

6

Musical notation for the second piece, Marianne S'En Va Au Moulin. It consists of two staves. The first staff is in treble clef with a key signature of one sharp (F#) and a 6/8 time signature. It begins with a series of quarter notes, followed by a repeat sign and a melodic phrase. The second staff is in treble clef with the same key signature and time signature, continuing the melody with various note values and rests.

20

Musical notation for the third piece, A St. Malo. It consists of two staves. The first staff is in treble clef with a key signature of one sharp (F#) and a 2/4 time signature. It begins with a series of quarter notes, followed by a repeat sign and a melodic phrase. The second staff is in treble clef with the same key signature and time signature, continuing the melody with various note values and rests.

29

Musical notation for the fourth piece, Prendre Un P'tit Coup. It consists of two staves. The first staff is in treble clef with a key signature of one sharp (F#) and a 2/4 time signature. It begins with a series of quarter notes, followed by a repeat sign and a melodic phrase. The second staff is in treble clef with the same key signature and time signature, continuing the melody with various note values and rests.

37

Musical notation for the fifth piece, C'Est L'Aviron. It consists of two staves. The first staff is in treble clef with a key signature of one sharp (F#) and a 2/4 time signature. It begins with a series of quarter notes, followed by a repeat sign and a melodic phrase. The second staff is in treble clef with the same key signature and time signature, continuing the melody with various note values and rests.

45

Musical notation for the fifth piece, C'Est L'Aviron (continued). It consists of two staves. The first staff is in treble clef with a key signature of one sharp (F#) and a 2/4 time signature. It begins with a series of quarter notes, followed by a repeat sign and a melodic phrase. The second staff is in treble clef with the same key signature and time signature, continuing the melody with various note values and rests.

55

Musical notation for the fifth piece, C'Est L'Aviron (continued). It consists of two staves. The first staff is in treble clef with a key signature of one sharp (F#) and a 2/4 time signature. It begins with a series of quarter notes, followed by a repeat sign and a melodic phrase. The second staff is in treble clef with the same key signature and time signature, continuing the melody with various note values and rests.

67

C'Est L'Aviron

Flute plays Intro

Musical notation for the fifth piece, C'Est L'Aviron (continued). It consists of two staves. The first staff is in treble clef with a key signature of one sharp (F#) and a 2/4 time signature. It begins with a series of quarter notes, followed by a repeat sign and a melodic phrase. The second staff is in treble clef with the same key signature and time signature, continuing the melody with various note values and rests.

78

