

Cello

# When Irish Eyes Are Smiling

Rev.:2010-01-06



Violin

# When Irish Eyes Are Smiling

Rev.:2010-01-06

2

8

15

22

29

37

45

3

Flute

# When Irish Eyes Are Smiling

Rev.:2010-01-06

The image shows a musical score for a flute part. It consists of seven staves of music, each starting with a measure number. The key signature is one sharp (F#) and the time signature is 3/4. The score includes various musical notations such as eighth notes, quarter notes, and rests. There are also performance markings like '2' above the first staff, '1.' and '2.' above the 29th staff, and '3' above the 44th staff. The music concludes with a double bar line at the end of the 44th staff.

2

8

15

22

29

37

44

3

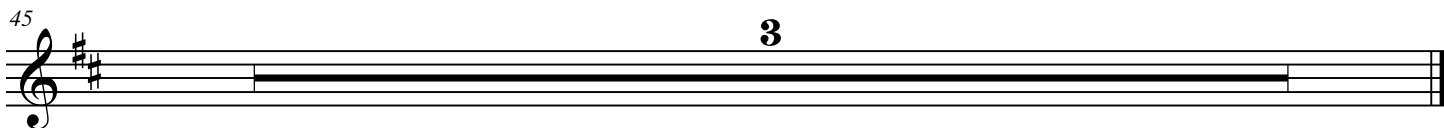
# When Irish Eyes Are Smiling



Harm-1

# When Irish Eyes Are Smiling

Rev.:2010-01-06



Lead

# When Irish Eyes Are Smiling

Rev.:2010-01-06

D A7 D D7 G



D D7 G D B7 E7 A



A7 D A7 D D7 G D D7



G E7 D B7 E7 A7 D A7 D



D7 G E7 D B7 E7 A7 D



45 **3**

